

**巴尔阀门**  
**BAAR VALVE CO., LTD**

**Industrial Valve Manufacturer**



**Choose Trust, Choose Baar**

CE CERTIFICATION NO.3N250613.BVTD93

[www.baarvalve.com](http://www.baarvalve.com)

# Brief introduction

Baar Valve Co., Ltd. is located in Jinnan District, Tianjin, adjacent to Tanggu Economic Development Zone in the east, Dagang Oilfield in the south, Tanggu Expressway and Tianjin International Airport in the back, with convenient transportation and superior geographical environment. Baar Valve Co., Valve is a subsidiary of Beoncy and now we have developed into a private enterprise with a certain production scale. Our company is an enterprise integrating scientific research, production, transportation and sales. The main products are soft-sealed butterfly valves, soft-sealed gate valves, metal-sealed gate valves, various check valves, steam traps, Y-type filters, etc. The company's main market is in China, and it began to develop overseas business in 2018.

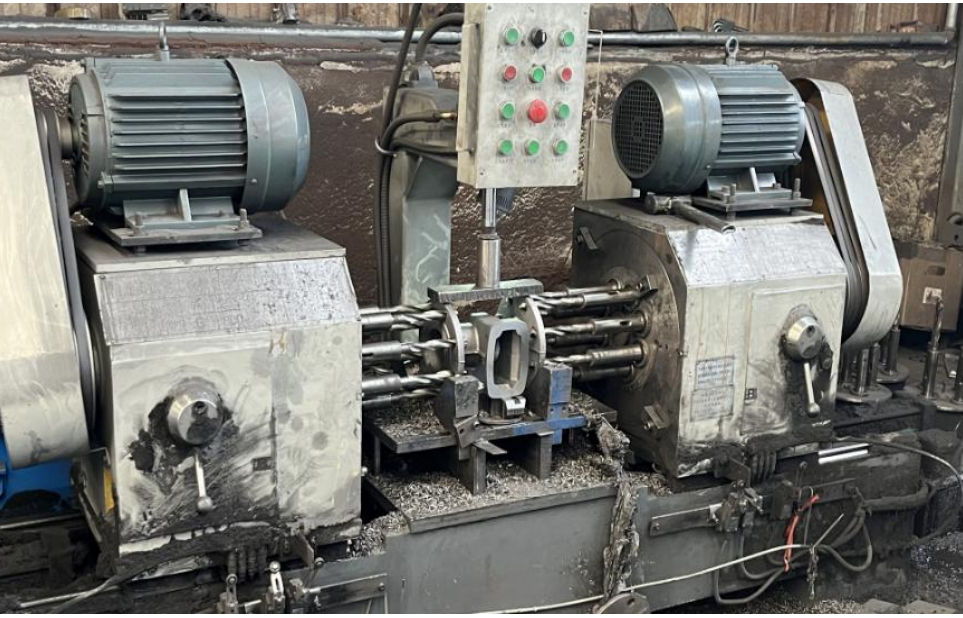
BAAR is a valve manufacturer engaged in valve development, manufacturing and sales. Products are manufactured with reference to ANSI, API, DIN, BS, JIS standards and China's GB standard by means of the latest technologies favored across the world. With pressure rating from 1.0MPa to 10MPa and port size from DN50 to DN4000. These valves can be operated manually, electrically, pneumatically, hydraulically, and electro-hydraulically, and made of different materials such as cast iron, ductile iron, carbon steel and the stainless steel (304, 316, 316L, 410...) also manufactured to different types and sizes. Also we are trading with some other valves as globe valve, ball valve, flanges, pipe fittings and so on, therefore meet the need for one-stop purchasing.

Now our valves are selling to many countries such as Pakistan, Mexico, India, Philippines, Malaysia, Brazil, Africa, Egypt, Middle east and so on. Welcome to join in Baar's family to serve the whole world as high quality valve with lower cost.

Bring high-quality and inexpensive valves to the world.

**Choose Trust, Choose Baar!!!**





BAAR

VALVE

## CERTIFICATION

شهادة – Verification – 증명서 – 验证 – Верификация

Form QAT\_10-M05, version 02, effective since October 07th, 2022

### VERIFICATION



No. 3N250613.BVTD93

Test Report / Technical Construction File no. TCFSH25A0995P

Verification's Holder: BAAR VALVE CO.,LTD  
4-8 Beidou Gongyu, Xianshuigu Town, Jinnan District, Tianjin

Manufacturer: BAAR VALVE CO.,LTD  
No.18 Zhongxin Road, Xiaozhan Town, Jinnan District, Tianjin

Verification ECM Mark:



Product: Butterfly Valve. Gate Valve. Check Valve.  
Model(s): DN40 up to DN2400, PN16, PN10, CLASS125, CLASS150, CIASS300, JIS5K, JIS10K.

Verification to: Standard:  
EN 593:2017, EN 558:2022, EN 13709:2003,  
EN 13789:2003, EN 1984:2010, EN 12266-1:2012,  
EN 1171:2015, EN 13397:2002, BS 1123:2006, BS 5352,  
BS 5351, API 6D, API 609, API 600, ASME B16.34,  
ASME B16.10, API 602, EN 13709:2010

related to CE Directive(s):  
2014/68/EU (Pressure Equipment)

**This document has been issued in accordance with the European Commission's note of 14 September 2022 ref. Ares (2022) 6342894 concerning voluntary certifications with non-notified procedure and for products intended for third countries outside the EU market.**

The manufacturer has voluntarily decided to submit its documents concerning the above-mentioned product for verification. Ente Certificazione Macchine confirms that the documentation made available and immediately returned to it, as containing sensitive data, meets the essential requirements of the above-mentioned directives. The verification activity carried out exclusively concerned the technical documentation and no verification was carried out on the product. This document cannot replace the EC Declaration of Conformity. The above conformity mark can be affixed to the technical documentation in accordance with the ECM regulation on its issue and use, published on the website [www.entecerma.it](http://www.entecerma.it)

**Issuance date: 13 June 2025**

**Expiry date: 12 June 2030**

For online check:



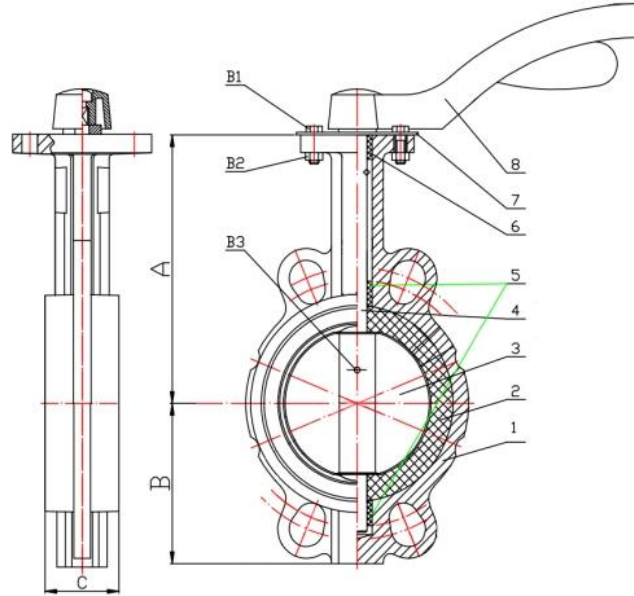
Approver  
Ente Certificazione Macchine  
Legal Representative  
Luca Bedonni



**Ente Certificazione Macchine Srl**

Via Ca' Bella, 243 – Loc. Castello di Serravalle – 40053 Valsamoggia (BO) - ITALY  
☎ +39 051 6705141 📠 +39 051 6705156 ✉ info@entecerma.it 🌐 www.entecerma.it

## Wafer Butterfly Valve (ZT Type)



### Features

1. Simple structure, small size and light weight: The wafer butterfly valve consists of a few parts, with a simple structure, small size, light weight, and is easy to install and maintain.
2. Simple operation: It can be quickly opened and closed by rotating 90°, which is simple and convenient to operate.
3. Good fluid control characteristics: When the butterfly valve is in the fully open position, the thickness of the butterfly plate is the only resistance when the medium flows through the valve body. Therefore, the pressure drop generated by the valve is very small, and it has good flow control characteristics.

### Performance Specification

Design Standard	BSEN 593
Face to Face Standard	ASNIEB16.10
Flange Drilled Standard	PN16
Inspection&Test Standard	API1598

NO	PARTS	MATERIAL
1	BODY	GGG50
2	SEAT	EPDM
3	DISC	SS304
4	STEM	SS410
5	BUSHING	POLYMER
6	SEAL	EPDM
7	FLUTED DISC	ALUMINUM
8	HANDLE	ALUMINUM
B1	HEXAGON BOLT	SS201
B2	NUT	SS201
B3	PIN	SS304

Size	A±2	B±2	C±2	PN10	PN16	150LB	5K	10K
DN50	140	69	41	∅ 125-4*∅ 18	∅ 125-4*∅ 18	∅ 120.5-4*∅ 18	∅ 105-4*∅ 15	∅ 120-4*∅ 19
DN65	148	77	43	∅ 145-4*∅ 18	∅ 145-4*∅ 18	∅ 139.5-4*∅ 18	∅ 130-4*∅ 15	∅ 140-4*∅ 19
DN80	156	96	44	∅ 160-8*∅ 18	∅ 160-8*∅ 18	∅ 152.5-4*∅ 18	∅ 145-4*∅ 19	∅ 150-8*∅ 19
DN100	173	112	50	∅ 180-8*∅ 18	∅ 180-8*∅ 18	∅ 190.5-8*∅ 22	∅ 165-8*∅ 19	∅ 175-8*∅ 19
DN125	186	126	53	∅ 210-8*∅ 18	∅ 210-8*∅ 21	∅ 216-8*∅ 22	∅ 200-8*∅ 19	∅ 210-8*∅ 23
DN150	204	138	54	∅ 240-8*∅ 22	∅ 240-8*∅ 22	∅ 241.5-8*∅ 22	∅ 230-8*∅ 19	∅ 240-8*∅ 23
DN200	230	170	59	∅ 295-8*∅ 22	∅ 295-12*∅ 22	∅ 298.5-8*∅ 22	∅ 280-8*∅ 23	∅ 290-12*∅ 23
DN250	275	207	65	∅ 350-12*∅ 22	∅ 355-12*∅ 26	∅ 362-12*∅ 26	∅ 345-12*∅ 23	∅ 355-12*∅ 25
DN300	310	243	75	∅ 400-12*∅ 22	∅ 400-12*∅ 26	∅ 432-12*∅ 26	∅ 390-12*∅ 23	∅ 400-16*∅ 25

## Lug Type Butterfly Valve

### Performance Parameters

PN:PN1.0MPa,PN1.6MPa,150LB

DN:DN40~1200mm

Suitable temperature: $\leq 100^{\circ}\text{C}$

Media:water,oil,gas



### Main Parts Materials

Body:ductile iron/cast iron/stainless steel/cast steel

Disc:ductile iron/stainless steel

Stem:stainless steel/carbon steel

Seat:NBR/EPDM/PTFE

Actuator:handle/gear worm/electric/pneumatic

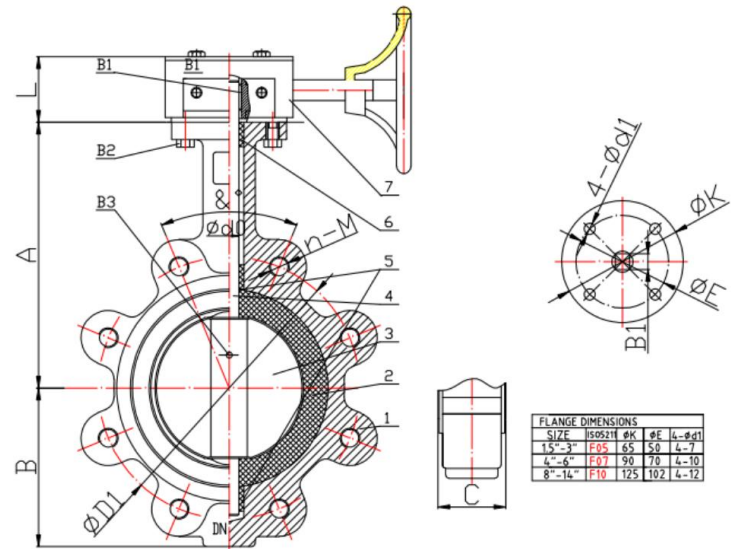
### Executive Standard

Design and manufacture:GB/T12238-2008,API609

Flange connection dimension:GB/T9113.1,GB/T17241.6,ANSI B16.5

Test and inspection:GB/T13927,API598

Connection mode:Wafer



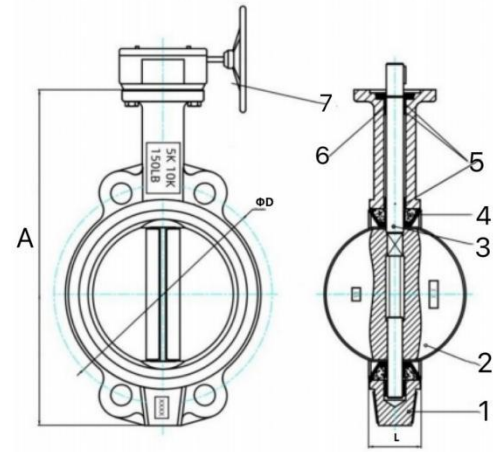
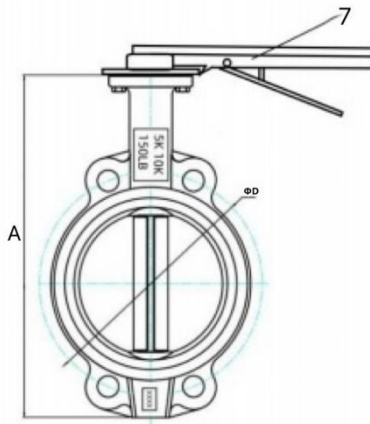
### Main Dimensions

DN	A	B	C	d0	L	B1	$\&^{\circ}$	ANSI		DIN PN10/PN16		AS2129 TABLE E	
								D1	n-M	D1	n-M	D1	n-M
50	165	76	42	12.6	45	10	$90^{\circ}$	120.5	4-5/8"	125	4-M16	114	4-M16
65	178	89	45	12.6	45	10	$90^{\circ}$	139.5	4-5/8"	145	4-M16	127	4-M16
80	185	95	45	12.6	45	10	$45^{\circ}$	152.4	4-5/8"	160	4/8-M16	146	4/8-M16
100	202	114	51	15.77	45	12	$45^{\circ}$	190.5	8-5/8"	180	8-M16	178	8-M16
125	216	127	55	18.92	45	14	$45^{\circ}$	216.0	8-3/4"	210	8-M16	210	8-M16
150	227	139	55	18.92	45	14	$45^{\circ}$	241.5	8-3/4"	240	8-M20	235	8-M20
200	263	175	60	22.1	75	17	$30^{\circ}$	298.5	8-3/4"	295	8/12-M20	292	8-M20
250	294	203	67	28.45	75	22	$30^{\circ}$	362.0	12-7/8"	350/355	12-M20/ M24	356	12-M20
300	338	242	76	31.6	75	22	$30^{\circ}$	432.0	12-7/8"	400/410	12-M20/ M24	406	12-M20

Note: 1. For general supply, DN50~150 comes as a handle type, but can also be fitted with a worm-gear device, for over DN150 the worm-gear type is used.

2. The rubber part can also be made of EPDM or fluorine rubber.

## Stainless Steel Wafer Butterfly Valve



### Features

1. Corrosion resistance and strength: Stainless steel wafer butterfly valves are usually made of stainless steel such as 304, 316/316L, which have excellent corrosion resistance and strength, can resist the erosion of various media, and are suitable for a variety of harsh environments.
2. Structural features: The wafer connection method makes the butterfly valve compact, easy and quick to install, saving space and time. The sealing structure adopts high-quality materials and advanced design, such as the three-eccentric sealing structure, the valve seat and the butterfly plate are almost wear-free, and have a sealing function that becomes tighter and tighter as it is closed.
3. Operational performance: The butterfly valve opens and closes quickly, has a small operating torque, is labor-saving and light, and is easy to operate manually or use with an automatic control system. It has a two-way sealing function and is not restricted by the flow direction and spatial position of the medium<sup>1</sup>

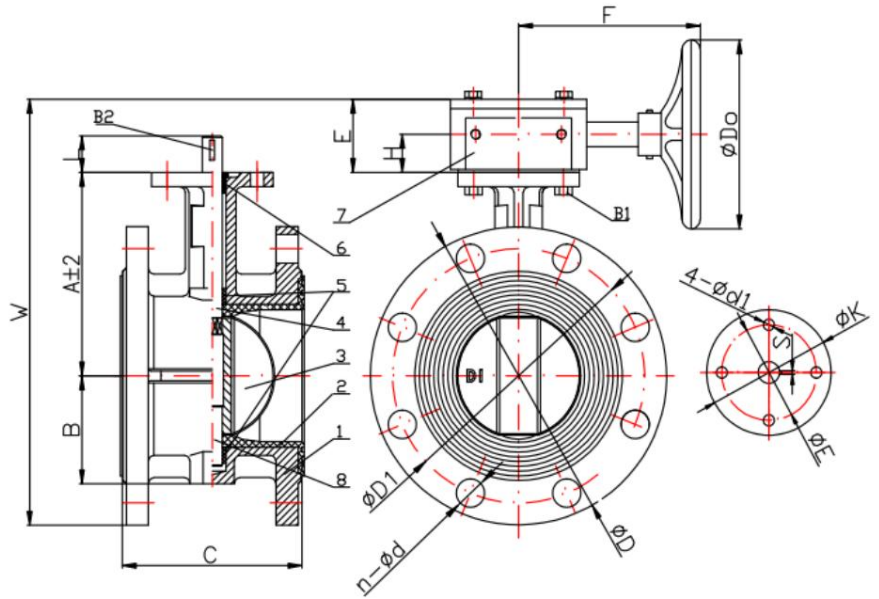
### Specification

1. Face to face :ISO5752;    2. Top flange:ISO5211
2. Flange drill:DIN2501 PN10/PN16.ANSI 150LB,BS4504 PN10/PN16,JIS 5K/10K

NO	PARTS	MATERIAL
1	BODY	SS304
2	DISC	SS304
3	STEM	SS410
4	SEAT	PTFE
5	BUSHING	POLYMER
6	SEAL	EPDM
7	ACTUATOR	SS304HANDLE/DI GEAR WORM

SIZE	A	L	ΦD				
			PN10	PN16	5K	10K	150LB
DN50	189	41	125	125	105	120	120.7
DN65	206	43	145	145	130	140	139.7
DN80	231	44	160	160	145	150	152.4
DN100	268	49	180	180	165	175	190.5
DN125	298	52.5	210	210	200	210	215.9
DN150	330	53	240	240	230	240	241.3
DN200	390	60	295	295	280	290	298.5
DN250	465	65	350	355	345	355	362
DN300	546	75	400	410	390	400	431.8

## Flanged Butterfly Valve



### Purpose

This valve is used for the water supply and drainage system in tap water, sewage, building, chemical etc. industries, usually used as an open-close equipment.

### Features

Concentric structure, strictly sealing, long durable

### Performance Parameters

DN: DN50~2000mm

PN: PN1.0MPa, PN1.6MPa, 150LB

Strength test: 1.5MPa, 2.4Mpa

Sealing test: 1.1MPa, 1.76MPa

Suitable temperature:  $\leq 120^{\circ} \text{C}$

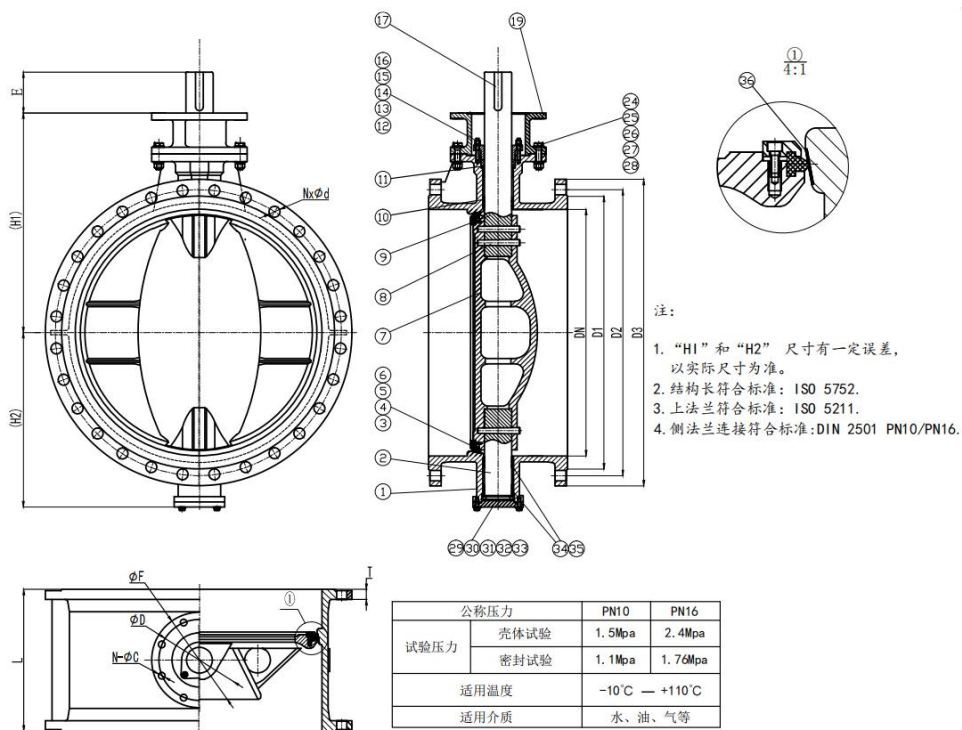
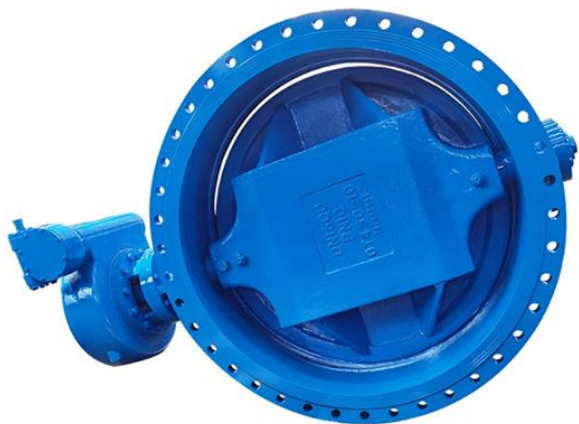
Suitable media: water, low temperature steam, oil goods, coal gas, seawater, sewage etc.

### Main Dimensions

DN	A	B	C	$\Phi D$	$\Phi D1$	L	$\Phi K$	$\Phi E$	4- $\Phi d1$	n- $\Phi d$	H	E	F	$\Phi D_o$	W
100	145	88	127	220	180	30	89	70	4-10.5	8-18	26	52	130	135	319
125	166	106	140	250	210	30	92	70	4-10.5	8-18	26	52	135	135	346
150	196	122	140	285	240	32	92	70	4-10.5	8-22	26	52	135	135	390.5
200	235	158	152	340	295	32	115	89	4-14.5	12-23	35	70	200	270	471
250	268	190	165	405	355	35	115	89	4-14.5	12-26	35	70	200	270	540.5
300	305	222	178	460	410	35	135	108	4-14.5	12-26	40	70	200	270	610
350	360	255	190	520	470	40	135	108	4-14.5	16-26	40	70	200	270	690
400	370	285	216	580	525	50	195	159	4-20	16-30	110	105	250	280	781

Note: Please make a call for larger sizes requirements.

## Double Eccentric Butterfly Valve Soft Sealing



### Features

1. This butterfly valve structure design novelty, overall size is small, light weight.
2. Disc plate with double eccentric, opening and closing is rapid, convenient operation.
3. Disc plate with double eccentric, no sliding friction between disc plate and the sealing ring, sealing surface wear resistance long service life, reliable sealing, easy to adjust.

### Working Principle

Rotate the butterfly valve handwheel, through the worm gear transmission, drive the stem disc plate with in the scope of 90 degrees to rotate, the disc plate is in open or closed, achieve the goal of on and off or cut off the medium.

### Main Parts Material

Body-Ductile iron

Disc-Ductile iron/Cast steel

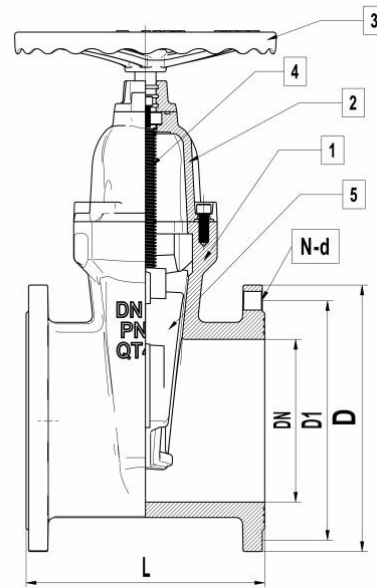
Stem-Stainless steel

Seal ring-EPDM/NBR/Fluorine rubber

### Main Dimensions

DN	H1	H2	S13	S14	PN10				PN16			
			L±3	L±3	D1	D2	D3	N-Φd	D1	D2	D3	N-Φd
400	490	335	216	310	480	515	565	16-Φ28	480	525	580	16-Φ31
450	520	400	222	330	530	565	615	20-Φ28	530	585	640	20-Φ31
500	570	405	229	350	582	620	670	20-Φ28	582	650	715	20-Φ34
600	640	480	267	390	682	725	780	20-Φ31	682	770	840	20-Φ37
700	680	530	292	430	794	840	895	24-Φ31	794	840	910	24-Φ37
800	750	630	318	470	901	950	1015	24-Φ34	901	950	1025	24-Φ40
900	815	690	330	510	1001	1050	1115	28-Φ34	1001	1050	1125	28-Φ40
1000	895	725	410	550	1112	1160	1230	28-Φ37	1112	1170	1255	28-Φ43
1200	1020	865	470	630	1328	1380	1455	32-Φ40	1328	1390	1485	32-Φ49
1400	1175	1005	530	710	1530	1590	1675	36-Φ43	1530	1590	1685	36-Φ49
1600	1280	1190	600	790	1750	1820	1915	40-Φ49	1750	1820	1930	40-Φ56
1800	1520	1280	670	870	1950	2020	2115	44-Φ49	1950	2020	2130	44-Φ56
2000	1700	1400	760	950	2150	2230	2325	48-Φ49	2150	2230	2345	48-Φ62

## Resilient Seat Gate Valve (BS5163)



### Feature

1. Such a design as the dustproof ring plus three layers o-ring makes the sealing reliable and on-line replaceable.
2. The design with an aluminum bronze inlaid in the gate leaves a good self-lubrication and a high strength the said bearing can be replaced without need to replace the integral gate when worn out after a long time use.
3. The gate is wrapped with rubber, anti-corrosion and good at tightness.
4. Advanced surface treatment, coated with harmless epoxy resin static powder, anti-corrosion, non-pollution, can be used in a drinking pipeline.
5. The body is gate-slot free designed, the channel is smooth without causing impurities to be piled up, more suitable for sewage working condition.
6. Reliable integral sealing, zero-leak for high pressure sealing under 1.5 times of PN and for low pressure sealing under 0.02MPa.

### Multiple Choices

HEAVY



MIDDLE



LIGHT



SIGNAL LINE



### Main Dimensions

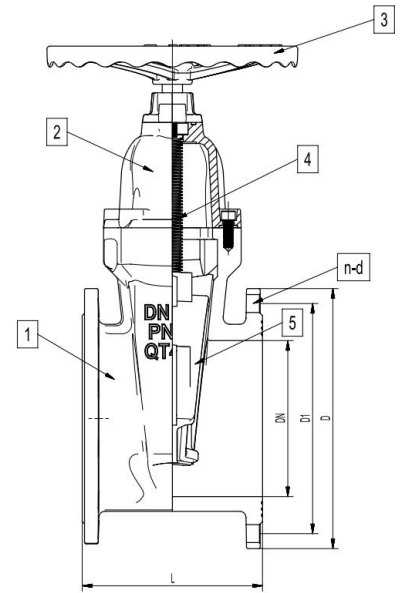
SIZE	L	PN10			PN16		
DN		D	D1	N-d	D	D1	N-d
DN50	178	160	125	4-19	160	125	4-19
DN65	190	180	145	4-19	180	145	4-19
DN80	203	195	160	8-19	195	160	8-19
DN100	229	215	180	8-19	215	180	8-19
DN125	254	245	210	8-19	245	210	8-19
DN150	267	280	240	8-23	280	240	8-23
DN200	292	335	295	8-23	335	295	12-23
DN250	330	405	350	12-23	405	355	12-28
DN300	356	460	400	12-23	460	410	12-28

Note: Please make a call for larger sizes requirements.

## Resilient Seat Gate Valve (DIN3352 F4)

### Feature

1. Such a design as the dustproof ring plus three layers O-ring makes the sealing reliable and on-line Replaceable.
2. The design with an aluminum bronze inlaid in the gate leaves a good self-lubrication and a high strength The said bearing can be replaced without need to replace the integral gate when worn out after a long time use.
3. The gate is wrapped with rubber, anti-corrosion and good at tightness.
4. Advanced surface treatment, coated with harmless Epoxy resin static powder, anti-corrosion, non-pollution, can be used in a drinking pipeline.
5. The body is gate-slot free designed, the channel is smooth without causing impurities to be piled up, more suitable for sewage working condition.
6. Reliable integral sealing, zero-leak for high pressure sealing under 1.5 times of PN and for low pressure sealing under 0.02MPa.



### Multiple Choices

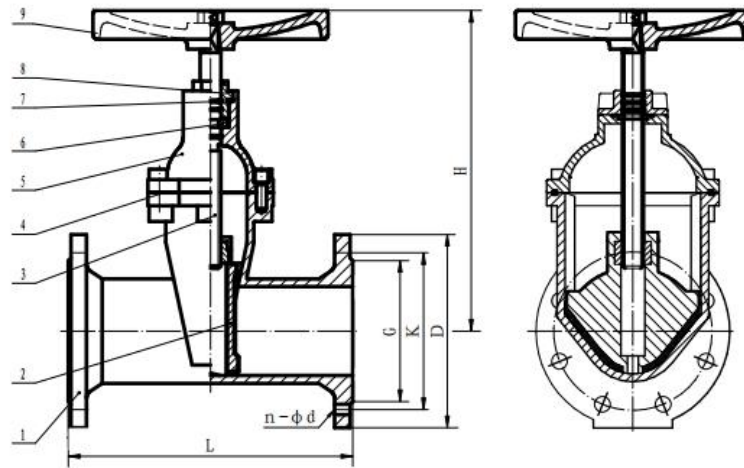


### Main Dimensions

SIZE DN	L	PN10			PN16		
		D	D1	N-d	D	D1	N-d
DN50	150	163	125	4-19	163	125	4-19
DN65	170	183	145	4-19	183	145	4-19
DN80	180	198	160	8-19	198	160	8-19
DN100	190	218	180	8-19	218	180	8-19
DN125	200	248	210	8-19	248	210	8-19
DN150	210	283	240	8-23	283	240	8-23
DN200	230	333	295	8-23	333	295	12-23
DN250	250	403	350	12-23	403	355	12-28
DN300	270	457	400	12-23	457	410	12-28

Note: Please make a call for larger sizes requirements.

## Resilient Seat Gate Valve (DIN F5)

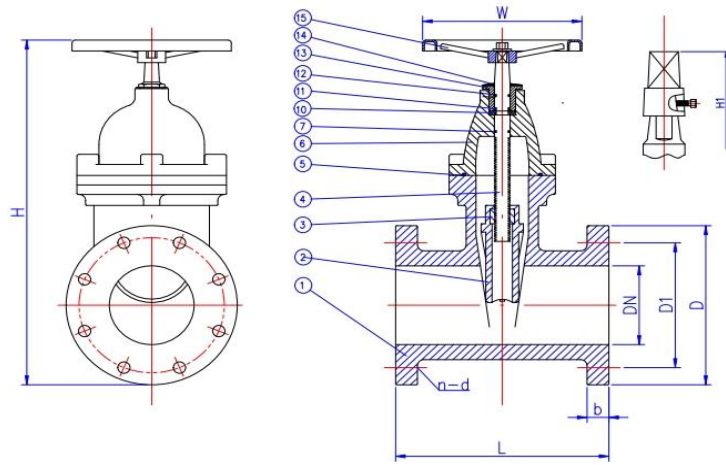


NO.	PART	MATERIAL
1	BODY	GGG50
2	DISC	GGG50+EPDM
3	STEM	SS410
4	BONNET GASKET	EPDM
5	BONNET	GGG50
6	LOCATION RING	GGG50
7	O-RING	EPDM
8	STEM NUT	GGG50
9	HANDLE WHEEL	WCB

Test Pressure	HYDROSTATIC	SHELL	2.4Mpa	SEAL	1.76Mpa
	AIR				
Standard	DESIGN CODE	EN1171			
	INSPECTION&TEST	EN12266			
	END STANDARD	EN 1092-1 PN16			
	FACE TO FACE	EN 558 SERI 15			
TITLE: GATE VALVE					
APPROVED					REV
CHECKED		DIN F5 STANDARD			
DRAWN					
DESIGNED		SCALE		UNIT	MM
SIGNATURE	BAAR VALVE CO.,LTD				

SIZE	L	D	K	G	n-∅ d	H
DN80	280	200	160	138	8-18	250
DN100	300	235	190	158	8-22	290
DN125	325	270	220	188	8-26	305
DN150	350	300	250	212	8-26	343
DN200	400	360	310	268	12-26	390

## Resilient Seat Gate Valve ( AWWA Standard)



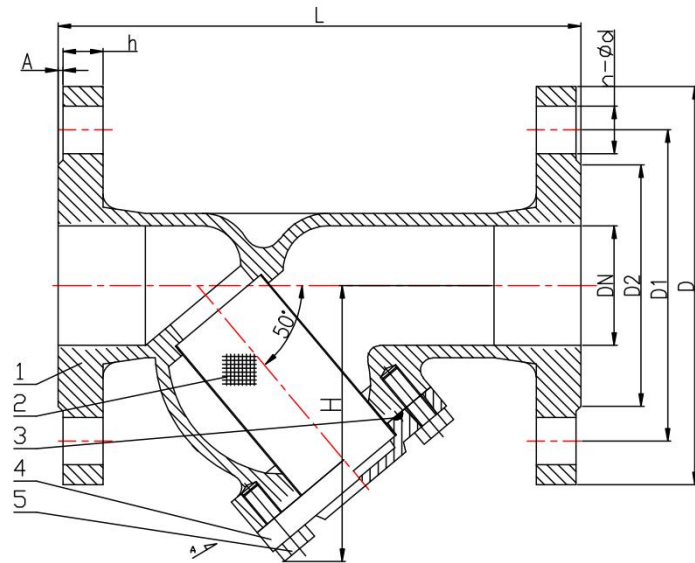
### Feature

1. The design and manufacture of American standard gate valves follow American engineering standards, such as API standards, ANSI standards, etc., to ensure that the design, manufacture and testing of products meet the requirements of relevant standards.
2. The sealing performance of American standard gate valves is good, and reliable sealing structures such as metal seals or soft seals are adopted to ensure that the valves have good sealing performance in the closed state to prevent leakage.

15	Ductile Iron	GGG50	ASTM A536
14	EPDM/NBR	EPDM/NBR	EPDM/NBR
13	Ductile Iron	GGG50	ASTM A536
12	EPDM/NBR	EPDM/NBR	EPDM/NBR
11	EPDM/NBR	EPDM/NBR	EPDM/NBR
10	Brass	Brass	ASTM B16
7	EPDM/NBR	EPDM/NBR	EPDM/NBR
6	Ductile Iron	GGG50	ASTM A536
5	EPDM/NBR	EPDM/NBR	EPDM/NBR
4	Brass Stainless Steel	Brass 20Cr13	ASTM B16 SS416
3	Brass	Brass	ASTM B16
2	Ductile Iron+EPDM Ductile Iron+NBR	GGG50+EPDM GGG50+NBR	ASTM A536+EPDM ASTM A536+NBR
1	Ductile Iron	GGG50	ASTM A536
NO.	MATERIAL		Specification
TEST PARESS URE		SHEEL	SEAL
	HYDROSTATIC	2.4MPa	1.76Mpa
STAND ARD		DESIGN CODE	AWWA C509
		INSPECTION&TEST	AWWA C509
		END STANDRAD	ANSI 150
		FACE TO FACE	ANSI B16.10
TITLE:Non-Rising Stem Resilient Seated Gate valve 1.5''-24''			
			Unit (mm)

SIZE	L	D	D1	D2	b	n	d	H	H1	W	W.T(KG)
1.5''	165	127	98.6	73.2	14.2	4	16	280	340	160	13
2''	178	152	120.7	91.9	15.8	4	19	300	360	160	14
2.5''	190	178	139.7	104.6	17.5	4	19	345	405	160	16
3''	203	191	152.4	127	19	4	19	390	450	200	23
4''	229	229	190.5	157.2	23.9	8	19	430	490	200	28
5''	254	254	215.9	185.7	23.9	8	22	510	590	260	37
6''	267	279	241.3	215.9	25.4	8	22	565	645	260	52
8''	292	343	298.5	269.7	28.5	8	22	680	760	320	77
10''	330	406	362	323.8	30.2	12	25	820	900	400	127
12''	356	483	431.8	381	31.8	12	25	930	1010	400	176
14''	381	533	476.3	412.7	35	12	29	1020	1100	460	322
16''	406	597	539.8	469.9	36.6	16	29	1100	1180	460	432
18''	432	635	577.9	533.4	39.6	16	32	1180	1260	560	542
20''	457	699	635	584.2	42.9	20	32	1250	1330	650	695
24''	508	813	749.3	692.1	47.8	20	35	1370	1450	650	845

## Y Type Strainer (BS Standard)



### Features

1. Nice modeling, a pressure testing hole is preset on the body.
2. Convenient and quick use. It is possible, according to the user's requirement, to change the screwed plug on the body into a ball valve and let its outlet connected to a sewage pipe, this can make it done to dredge sewage with pressure while not to remove the bonnet.
3. Filtering screens of different filtering accuracies can be provided according to the user's requirement, making the filtering screen cleaned more conveniently.
4. The fluid channel is designed scientifically and reasonably, smaller flowing resistance and greater flow. The total area of the mesh comes as 3-4 times that of DN.
5. The telescopic type makes installation and removal more convenient.

### Main Parts Materials

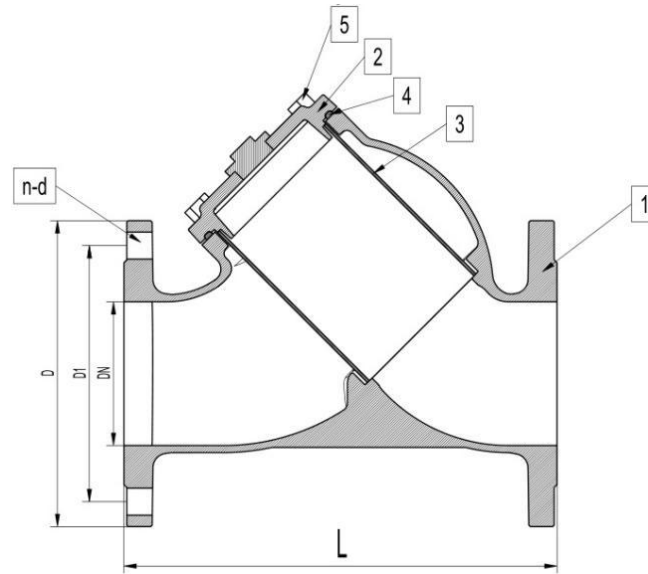
NO.	Title	Material	
1	Body	Ductile iron	Carbon steel
2	Filtering screen	Stainless steel	
3	Bonnet	Ductile iron	Carbon steel
4	Cover	Ductile iron	
5	Screw	Stainless steel	

### Main Dimensions

DN	L	h	A	D	D1	D2	n-Φd	H
50	203	14	2	155	125	100	4-Φ19	117
65	218	14	2	174	145	118	4-Φ19	126
80	250	15.5	2	192	160	130	8-Φ19	150
100	297	16.5	2	211	180	153	8-Φ19	174
125	315	17	2	239	210	182	8-Φ19	179
150	347	17.5	2	276	240	208	8-Φ23	215
200	420	20	2	330	295	255	12-Φ23	280
250	527	20	3	400	355	318	12-Φ28	
300	610	24	3	460	410	365	12-Φ28	

Note: Please make a call for larger sizes requirement

## Y-Strainer (DIN3202 F1)



### Features

1. Nice modeling, a pressure testing hole is preset on the body.
2. Convenient and quick use. It is possible, according to the user's requirement, to change the screwed plug on the body into a ball valve and let its outlet connected to a sewage pipe, this can make it done to dredge sewage with pressure while not to remove the bonnet.
3. Filtering screens of different filtering accuracies can be provided according to the user's requirement, making the filtering screen cleaned more conveniently.
4. The fluid channel is designed scientifically and reasonably, smaller flowing resistance and greater flow. The total area of the mesh comes as 3-4 times that of DN.
5. The telescopic type makes installation and removal more convenient.

### Main Parts Materials

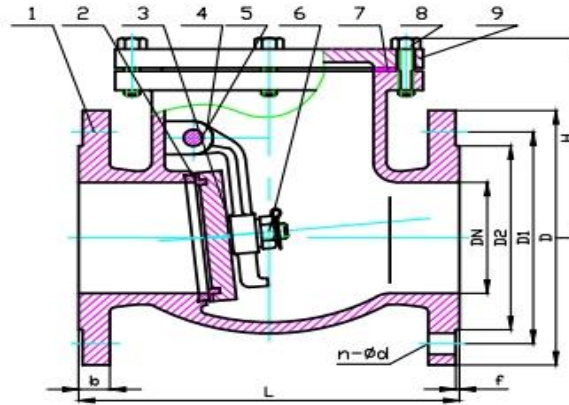
MAIN PARTS MATERIALS LIST		
NO.	NAME	MATERIAL
1	BODY	GGG50
2	BONNET	GGG50
3	NET	SS304
4	O-RING	NBR
5	SCREW	SS201

### Main Dimensions

SIZE DN	L	PN10			PN16		
		D	D1	n-d	D	D1	n-d
DN50	230	164	125	4-19	164	125	4-19
DN65	290	185	145	4-191	185	145	4-191
DN80	310	200	160	8-19	200	160	8-19
DN100	350	220	180	8-19	220	180	8-19
DN125	400	249	210	8-19	249	210	8-19
DN150	480	285	240	8-23	285	240	8-23
DN200	600	339	295	8-23	339	295	12-23
DN250	730	403	350	12-23	403	355	12-28
DN300	850	461	400	12-23	461	410	12-28

Note: Please make a call for larger sizes requirements.

## Swing Check Valve (BS5153 Standard)



### Features

1. Structural features: The valve adopts an internal rocker arm swing structure. The opening and closing parts are installed inside the valve body and do not penetrate the valve body. Except for the sealing gasket or sealing ring at the middle flange, there is no external leakage point as a whole, avoiding the possibility of valve leakage. In addition, the connection between the rocker arm and the valve disc adopts a spherical connection structure, which allows the valve disc to have a certain degree of freedom within the range of 360°, which can play a role in micro-position compensation.
2. Application range: National standard swing check valves are widely used in pipelines in various working conditions in the petroleum, chemical, pharmaceutical, and power industries, and are suitable for various media such as water, steam, oil, and acidic media.

### Main Parts Materials

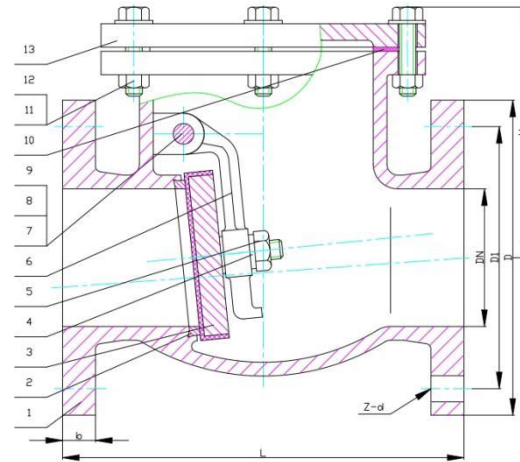
No.	PART NAME	Material
1	Body	GGG50
2	Seat	BRASS
3	Cover	GGG50
4	Hanger	GGG40
5	Pin	S.S
6	Nut/Peg	CARBON STEEL/S.S
7	Gasket	GRAPHITE
8	Bolt/Washer	CARBON STEEL
9	Bonnet	GG25

### Main Dimensions

DN	L	D	D1	D2	H	b	f	N-Φd
40	165	150	110	88	114	19	3	4-19
50	203	165	125	102	127	19	3	4-19
65	216	195	145	122	137	19	3	4-19
80	241	200	160	138	150	19	3	8-19
100	292	220	180	158	164	19	3	8-19
125	330	250	210	188	165	19	3	8-19
150	356	285	240	212	205	19	3	8-23
200	495	340	295	268	249	22	3	12-23
250	622	405	355	319	305	22	3	12-28
300	698	460	410	370	412	24.5	4	12-28

Note: Please make a call for larger sizes requirements.

## Swing Check Valve (API Standard)



### Features

1. Standard Compliance: American Standard Swing Check Valves comply with the requirements of ANSI B16.34 and API 16D, ensuring product standardization and interchangeability.
2. Valve disc type: The valve disc is of swing type. This design allows the fluid to pass smoothly in horizontal and vertical pipes, improving the flexibility of use.
3. Sealing performance: The built-in rocker pin structure reduces the possibility of external leakage. At the same time, the bolt connection between the valve body and the valve cover and the internal pressure self-sealing structure of the middle flange further enhance the sealing performance and ensure safe use under high pressure conditions.

### Main Parts Materials

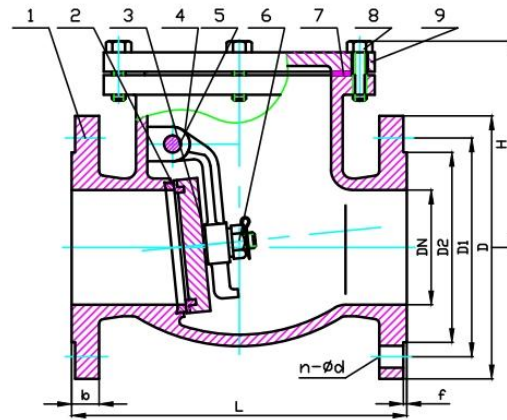
NO.	PART NAME	MATERIAL	STANDARD
1	BODY	GRAY CAST IRON	ASTM A126B
2	BODY SEAT RING	BRASS	ASTM B16
3	DISC	DUCTILE IRON /NBR	ASTM A536/NBR
4	WASHER	CARBON STEEL	ASTM A307
5	LOCKING NUT	CARBON STEEL	ASTM A307
6	ARM	DUCTILE IRON	ASTM A536
7	HING PIN	STAINLESS STEEL	2CR13
8	PLUG	CARBON STEEL	ASTM A307
9	GASKET	NYL	
10	GASKET	NBR	
11	BOLT	CARBON STEEL	ASTM A307
12	NUT	CARBON STEEL	ASTM A307
13	BONNET	GRAY CAST IRON	ASTM A126B

### Main Dimensions

DN	D	D1	L	b	Z-d	H
Φ40	Φ127	Φ98.5	165	15	4-Φ16	120
Φ50	Φ152	Φ120.5	203	16	4-Φ19	137
Φ65	Φ178	Φ139.5	216	18	4-Φ19	147
Φ80	Φ191	Φ152.5	241	19	4-Φ19	159
Φ100	Φ229	Φ190.5	292	24	8-Φ19	180
Φ125	Φ254	Φ216	330	24	8-Φ22	203
Φ150	Φ279	Φ216	356	26	8-Φ22	223
Φ200	Φ343	Φ298.5	495	29	8-Φ22	258
Φ250	Φ406	Φ362	622	30	12-Φ25	290
Φ300	Φ483	Φ432	698	32	12-Φ25	325
Φ350	Φ533	Φ476	787	35	12-Φ29	361
Φ400	Φ597	Φ540	914	37	12-Φ29	388

Note: Please make a call for larger sizes requirements.

## Swing Check Valve (DIN3202 Standard)



### Features

1. Structural features: German standard swing check valve has a compact and reasonable product structure, ensuring the reliability of sealing and excellent performance. It is small in size and light in weight, suitable for a wide range of fluid control applications. The valve disc closes quickly and moves sensitively, with small impact force when closing, and is not prone to water hammer. At the same time, the flow channel is unobstructed and the fluid resistance is small. These characteristics make the German standard swing check valve perform well in various working conditions.
2. Scope of application: German standard swing check valve is suitable for a variety of media, such as water, steam, etc., and can work under a wide range of temperature and pressure conditions, from normal pressure to high pressure, and from low temperature to high temperature environment.

### Main Parts Materials

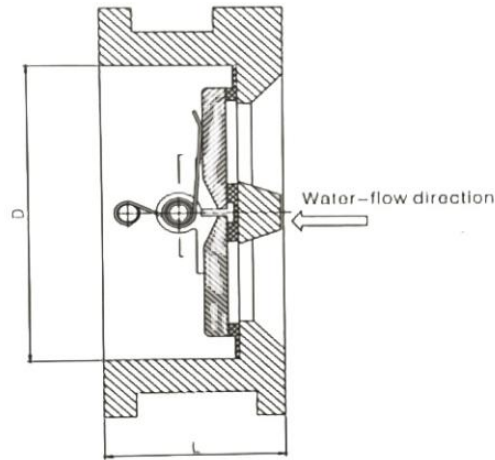
NO.	PART NAME	Material
1	Body	GGG50
2	Seat	BRASS
3	Cover	GGG50
4	Hanger	GGG40
5	Pin	S.S
6	Nut/Peg	CARBON STEEL/S.S
7	Gasket	GRAPHITE
8	Bolt/Washer	CARBON STEEL
9	Bonnet	GG25

### Main Dimensions

DN	L	D	D1	D2	H	b	f	N-Φ d
40	180	150	110	88	114	19	3	4-19
50	200	165	125	102	127	19	3	4-19
65	240	185	145	122	137	19	3	4-19
80	260	200	160	138	150	19	3	8-19
100	300	220	180	158	164	19	3	8-19
125	350	250	210	188	185	19	3	8-19
150	400	285	240	212	205	19	3	8-23
200	500	340	295	268	249	22	3	12-23
250	600	405	355	319	305	22	3	12-28
300	700	460	410	370	412	24.5	4	12-28
350	800	520	470	415	445	26.5	4	16-28
400	900	580	525	465	505	28	4	16-31
450	1000	640	585	520	695	30	4	20-31
500	1100	715	650	570	750	31.5	4	20-34
600	1300	840	770	670	850	36	4	20-37

Note: Please make a call for larger sizes requirements.

## Wafer Check Valve



### Purpose

This valve is used to prevent the medium in the pipeline from backflow and features a small volume.

### Features

A simple structure, reliable performance, easy installation and repair. The disc uses a torsion spring for resetting, has water hammer preventing function and can be mounted on horizontal and vertical pipelines.

### Executive standard

Structural length: GB/T12221

Test and inspection: GB/T13927

### Main performance parameters

DN	40-600			mm
PN	1.0	1.6	2.5	MPa
Casing test	1.5	2.4	3.75	
Sealing test	1.1	1.76	2.75	
Hermetic seal test	0.6	0.6	0.6	
Suitable temperature	≤ 100			°C
Suitable media	Water			

### Main part materials

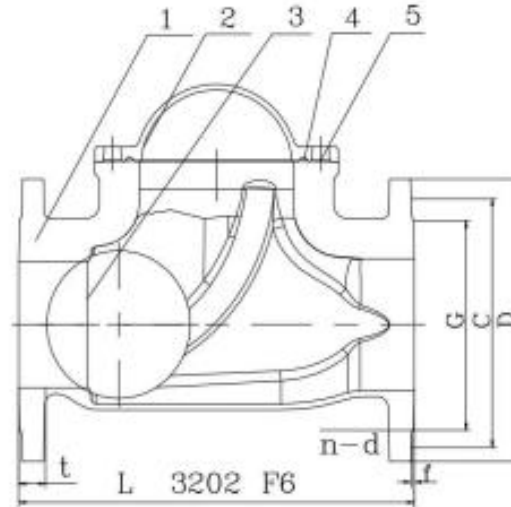
Model	Body	Disc	Stem	Spring	Seal ring	Suitable temperature
H76X	Cast iron	Cast iron	Stainless steel	Stainless steel	Rubber	≤100°C
H76H	Cast steel	Cast steel	Stainless steel	Stainless steel	Alloy steel	425°C
H76W	Stainless steel	Stainless steel	Stainless steel	Stainless steel	Stainless steel	425°C

### Main dimensions

DN	40	50	65	80	100	125	150	200	250	300	350	400	450	500	600
L	33	43	46	64	64	70	76	89	114	114	127	140	152	152	178
D	55	65	80	95	117	141	168	219	324	324	356	418	467	526	626

Note: Please make a call for larger sizes requirements.

## Ball Type Check Valve (DIN3202 F6)



### Features

1. Compared with traditional valves, the size and weight of the ball check valve are greatly reduced, usually only 1/4~1/20 of the traditional micro-resistance slow-closing check valve, which is easy to carry and install.
2. The disc closes quickly, reducing water hammer pressure and protecting pumps and other equipment from damage.
3. The ball check valve can adapt to various installation requirements and can be used in both horizontal and vertical pipelines.
4. Good sealing performance: The sealing surface of the ball check valve adopts a spherical design, which fits tightly with the valve seat to form a reliable seal, reduce the possibility of leakage, and ensure that the fluid does not flow back when the valve is closed, which is essential to prevent media contamination and ensure system safety and stable operation.

### Main material

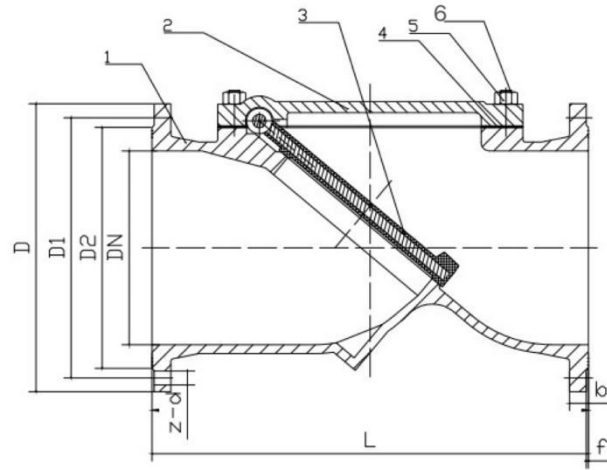
Valve body	GGG50
Gasket	EPDM
Ball	GGG50+EPDM
Valve cover	GGG50
Bolt	201 Stainless steel

### General assembly drawing of F6 Ball check valve

	L	D		C		t	G	f	n-b	
		PN1.0	PN1.6	PN1.0	PN1.6				PN1.0	PN1.6
DN40	180	150		110		15	84	2	4-19	
DN50	200	165		125		15	99	2	4-19	
DN65	240	183		145		16	119	2	4-19	
DN80	260	200		160		17	133	2	8-19	
DN100	300	215		180		19	154	2	8-19	
DN125	350	250		210		19	184	2	8-19	
DN150	400	285		240		21	210	2.5	8-23	
DN200	500	340		295		23	266	2.5	8-23	8-28
DN250	600	395	405	350	355	24	319	2.5	12-23	12-28
DN300	700	445	460	400	410	25	370	3	12-23	12-28

Note: Please make a call for larger sizes requirements.

## Rubber Flap Check Valve



### Design requirements

1. Design and manufacturing standards are in accordance with GB/T13932-2007.
2. The structural length standard shall be in accordance with GB/T12221-2005.
3. The flange connection size standard is in accordance with GB/T9113.1-2010.

### Performance Specifications

Nominal Pressure	1.6		
Experimental Pressure	Strength Test	2.4	Mpa
	Sealing Test	1.76	
	Airtightness Test	/	
Operating Temperature		$\leq 80^{\circ}\text{C}$	
Applicable Temperature: Water Oil etc.			

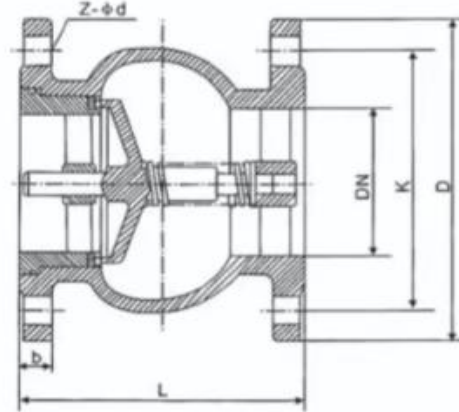
NO.	NAME	MATERIAL	REMARK
1	Body	QT450	
2	Cover	QT450	
3	Clack	QT450+NBR	
4	Gasket	NBR	
5	Nut	2Cr13	
6	Bolt	2Cr13	

### Main dimensions

DN	L	D	D1	D2	b	f	Z-d
50	205	160	125	100	14	2	4-18
65	225	180	145	120	15	2	4-18
80	244	195	160	135	16	2	8-18
100	292	215	180	155	17	3	8-18
125	300	245	210	185	18	3	8-18
150	358	280	240	210	20	3	8-23
200	437	335	295	265	22	3	12-23
250	502	405	355	320	25	3	12-23
300	560	460	410	375	28	3	12-25

Note: Please make a call for larger sizes requirements.

## Silence Check Valve



### Features

1. The silencer check valve adds a silencer function to the ordinary check valve, which can reduce noise when the valve is closed. It adopts a special structure and material design to reduce the noise when the fluid passes through the valve.
2. The silencer check valve uses a spring to accelerate the closing speed of the valve disc and reduce the generation of water hammer. The valve disc is a hollow thin shell structure, which reduces the inertia of the valve disc, enables the valve disc to start quickly when closed, and also reduces the impact noise when closing.
3. The force transmission joint has a certain displacement, which can be adjusted according to the on-site installation dimensions during installation and maintenance to adapt to pipeline installation errors.

### Material of main parts

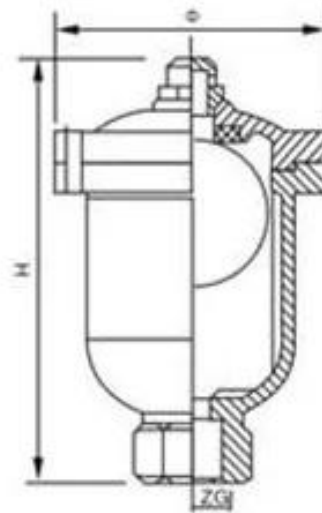
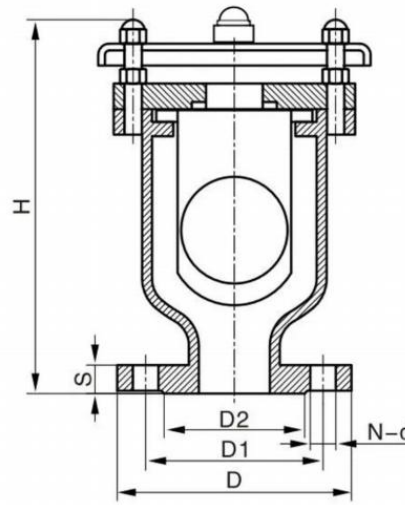
Part Name	Material Name
Valve Body	Ductile iron    Stainless Steel
Seal Packing Collar	Ding Nitrile rubber (NBR)
Spring	Stainless Steel wire ICr18Ni9Ti
Valve Stem	Stainless Steel rod 2Cr13

### Main dimensions

PN(MPa)	DN (mm)	L	D	K	b	Z-Φd
16	40	107	145	110	17	4-Φ18
	50	125	165	125	17	4-Φ18
	65	145	185	145	20	4-Φ18
	80	155	200	160	21	8-Φ18
	100	165	220	180	22	8-Φ18
	125	180	245	210	22	8-Φ18
	150	210	275	240	24	8-Φ22
	200	250	340	295	26	12-Φ22
	250	290	405	355	26	12-Φ26
	300	310	460	410	28	12-Φ26
	350	330	520	470	28	16-Φ26
	400	335	580	525	30	16-Φ30
	450	400	640	585	32	20-Φ30
	500	450	715	650	33	20-Φ33
600	505	840	770	35	20-Φ36	

Note: Please make a call for larger sizes requirements.

## Air Vent Valve (Flange And Thread Type)



### Features

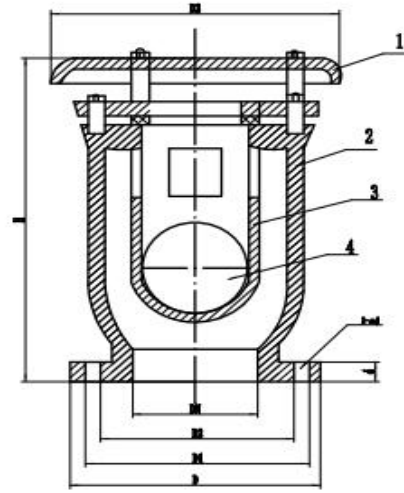
1. Good effect of absorbing vibration and reducing noise: Its high elasticity and displacement capacity help absorb vibration, reduce the vibration and noise of the piping system, and improve the smooth operation of the system.
2. Automatic exhaust: Some exhaust valves have the function of automatic exhaust. They can automatically open to exhaust when there is air in the system and automatically close after the air is exhausted. It is convenient and practical.
3. Good sealing: The lever sealing end face of the exhaust valve is supported by a spring, which can expand and contract accordingly with the movement of the lever, ensuring the sealing without exhausting the air and avoiding water leakage in the system.
4. Wide range of application: There are many types of exhaust valves, such as clean water compound type, sewage compound type, quick exhaust valve, micro exhaust valve, etc., which are suitable for different working conditions, such as water supply system, sewage system, etc.

### Main dimensions

SIZE	H	D	D1	S	N-d
DN50	165	165	125	15	4-18
DN65	165	185	145	15	4-18
DN80	180	200	160	16	8-18
DN100	180	220	180	16	8-18

Note: Please make a call for larger sizes requirements.

## Air Vent Valve (High Speed Exhaust Valve)



### Features

- One-way flow:** The one-way exhaust and intake valve allows gas or liquid to flow in a specific direction, that is, it can only flow from one end to the other end, but not in the opposite direction. This design ensures the one-way flow of the fluid and avoids the problems caused by reverse flow.
- Prevent backflow:** When the internal pressure of the container is higher than the external pressure, the one-way exhaust and intake valve will automatically open to discharge excess gas or liquid; and when the internal pressure drops to a certain level, the valve will automatically close to prevent external air, water vapor, etc. from entering the container.

Performance Specifications sheet			
Nominal diameter(mm)		DN25-300	
Nominal Pressure(MPa)		1.6MPa	
Test Pressure(MPa)	Strength test	2.4MPa	
	Sealing test	1.76MPa	
Maximum operating temperature		≤80℃	
Applicable media		Water	

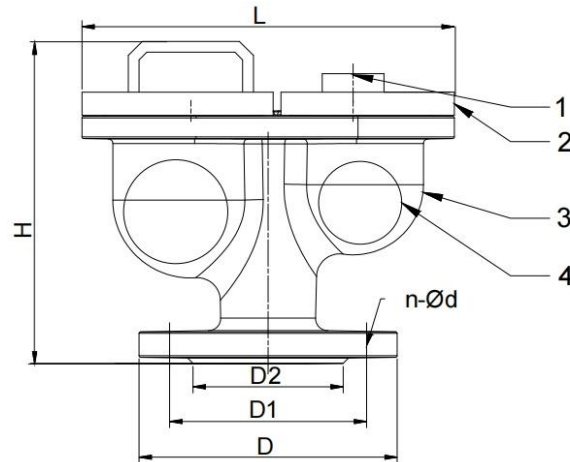
No.	Part Name	Material
1	Valve Cover	Carbon Steel
2	Body	QT450
3	Float Bucket	Plastic(ABS)
4	Float	Stainless Steel

### Technical requirements:

- Design, manufacturing and acceptance requirements shall comply with CJ/T217-2006
- Valve inspection and testing technology shall comply with GB/T13927-2008
- Flange dimensions shall comply with IG 20692-1997
- All dimensions shall be in millimeters (m)

Main dimensions					
Nominal diameter DN(mm)	D	D1	D0	H	Z-Φ d
25	115	85	66	150	4-18
32	135	100	85	165	4-18
40	142	110	90	165	4-18
50	158	125	102	165	4-18
65	180	146	112	175	4-18
80	192	160	132	180	8-18
100	212	180	155	195	8-18
125	235	200	178	240	8-18
150	278	240	215	245	8-18
200	334	295	260	310	8-12-22
250	400	353	310	390	12-25
300	458	400	360	400	12-22-25

## Double Hole Air Vent Valve (DIN Standard)



### Features

1. Working principle: When the internal pressure of the pipeline exceeds the set value, the exhaust valve will automatically open, release the internal gas, and restore the system pressure to balance; when the system pressure drops below the set value, the exhaust valve will close to prevent the gas from continuing to be discharged.
2. Structural type: The structure of the exhaust valve is diverse, and common types include heating type, trace type, fast type and compound type. Different types of exhaust valves differ in structure, function and application scenarios. For example, the trace exhaust valve is mainly used to remove trace dissolved air in the pipeline, while the fast exhaust valve is suitable for occasions where a large amount of gas needs to be removed quickly.

Working Pressure	PN16
Working Environment	Water. Oil. Steam
Working Temperature	≤120°C

NO	Part name	Material
2	Bonnet	GGG50
1	Float	SS304
	Body	GGG50

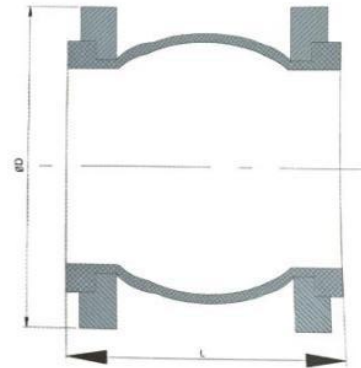
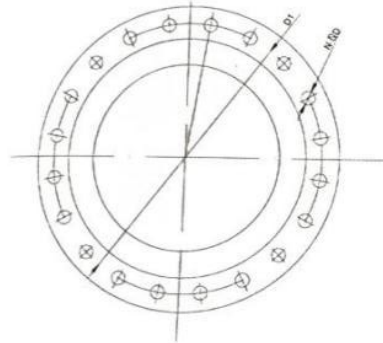
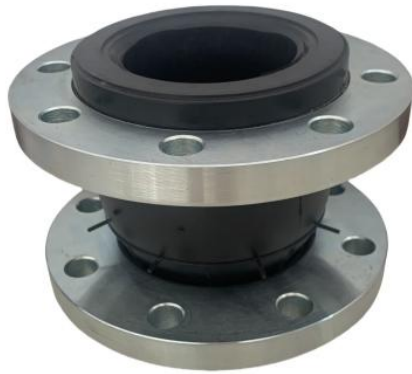
  

Mark	No.	Change file No.	Sign	Date	Drawing	Weight	Scale
Design		Standard					
Corred		Authorized					
Audit		Approved by					
Technic		Date					

Main outer size				
DN	50	65	80	100
L	245	245	310	330
H	210	210	265	280
D	165	185	200	220
D1	125	145	160	180
D2	99	118	132	156
N-Φd	4-18	4-18	8-18	8-18

Note: Please make a call for larger sizes requirements.

## Rubber Expansion Joint (Flange Type)



### Features

1. High pressure resistance and good elasticity: It can withstand high pressure and has good elasticity to adapt to axial, lateral and angular displacement, which is crucial for the stable operation of the pipeline system.
2. Large displacement and balanced pipeline deviation: The design of the rubber flexible joint allows a certain amount of displacement, which helps to balance the deviation in the pipeline and reduce stress concentration and damage caused by pipeline deviation.
3. Good effect of absorbing vibration and reducing noise: Its high elasticity and displacement capacity help absorb vibration, reduce the vibration and noise of the piping system, and improve the smooth operation of the system.

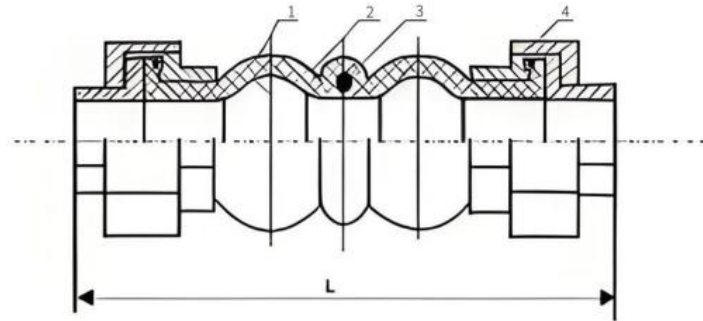
Working pressure(Mpa)	1.6
Bursting Pressure(Mpa)	3
Angle of Deflection	15
Vacuity Kpa(mmHg)	86.7 (650)
Applicable Temp	-15~115℃
Applicable Media	Air,Compressed, Water,Weak Acid,Alkali,etc

### Main dimensions

SIZE		L	D		D1		n-Φd		轴向位移 MM		横向位移 MM	偏转角度 (α1+α2)
IN	DN		PN10	PN16	PN10	PN16	PN10	PN16	伸长	压缩		
1 1/4	32	95	140		100		4-18		6	9	9	15
1 1/2	40	95	150		110		4-18		6	10	9	15
2	50	105	165		125		4-18		7	10	10	15
2 1/2	65	115	185		145		4-18		7	13	11	15
3	80	135	200		160		4-18	8-18	8	15	12	15
4	100	150	220		180		8-18	8-18	10	19	13	15
5	125	165	250		210		8-18	8-18	12	19	13	15
6	150	180	285		240		8-23	8-23	12	20	14	15
8	200	210	340		295		8-23	12-23	16	25	22	15
10	250	230	395	405	350	355	12-23	12-27	16	25	22	15
12	300	245	445	460	400	410	12-23	12-27	16	25	22	15

Note:Please make a call for larger sizes requirements.

## Rubber Expansion Joint (Threaded Type)



### Features

1. Small size and light weight: The design of the threaded rubber flexible joint makes it small in size and light in weight, easy to install and maintain.
2. High elasticity: The rubber material has high elasticity and is suitable for the transportation of granular, powdery and gas in various industries, and can reduce vibration and noise.
3. High air tightness: The internal density is high, it can withstand high pressure, reduce vibration and noise, has good elasticity and is easy to use.
4. Medium resistance: Different rubber materials are selected for different media, such as natural rubber, styrene-butadiene rubber, nitrile rubber, etc., with excellent properties such as heat resistance, acid resistance and corrosion resistance.
5. Weather resistance: It adopts high-strength and hot and cold stable polyester cord fabric oblique compound, which is vulcanized by high-pressure and high-temperature molds, and has good weather resistance and radiation resistance.

Working Pressure:1.6Mpa

Bursting Pressure:4.8Mpa

Temperature:-15~115℃

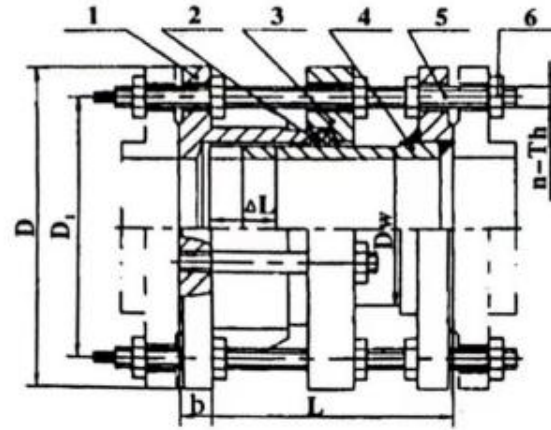
NO	PARTS	MATERIAL
1	Inner Outer Rubber	EPDM
2	Frame	Nylon Cord Fabric
3	Pressurized Circle	Steel Wire
4	Threaded Joint	Forged Cast Iron

### Main dimensions

Size		L	Axial Displacement		Lateral Displacement	Haorizontal Isplacement
mm	inch	mm	Extension	Compression		
DN20	1/2	195	5-6	22	22	45°
DN25	1/2	200	5-6	22	22	45°
DN32	1-1/4	210	5-6	22	22	45°
DN40	1-1/2	215	5-6	22	22	45°
DN50	2	220	5-6	22	22	45°
DN65	2-1/2	240	5-6	22	22	45°
DN80	3	240	5-6	22	22	45°

Note:Please make a call for larger sizes requirements.

## Transmission Joint



### Features

1. Displacement adjustment: The force transmission joint has a certain displacement, which can be adjusted according to the on-site installation dimensions during installation and maintenance to adapt to pipeline installation errors.
2. Protective function: The force transmission joint can withstand the axial pressure of the pipeline, protect pumps, valves and other equipment from damage, and improve work efficiency.
3. Compensation and relief of thrust: The force transmission joint can effectively compensate and relieve the thrust of the pipeline and blind plate, avoid the thrust concentration on the near end of the pipeline or pump, and prevent the impact force from damaging equipment and instruments.
4. Pressure resistance and durability: The force transfer joint has strong pressure resistance and durability, can be used in a variety of environmental conditions, provides strong protection for the pipeline, and can also be used for sewage treatment.

### Main Parts Materials List

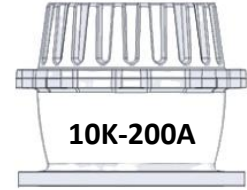
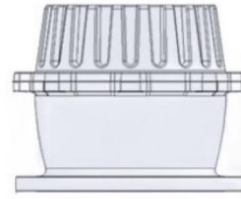
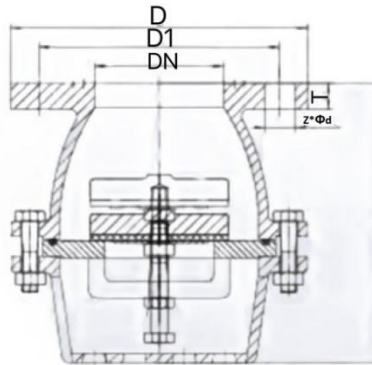
NO	Parts	Material
1	Body	Q235A
2	Seal	NBR
3	Bonnet	Q235A
4	Flange	Q235A
5	Bolt	Q235A
6	Nut	Q235A

### Main dimensions

Size	D	D1	N-Th	b
DN65	180	146	4-M16	20
DN80	195	160	8-M16	22
DN100	215	180	8-M16	24
DN125	245	210	8-M16	26
DN150	280	240	8-M20	26
DN200	335	295	8-M20	28
DN250	405	355	12-M20	28
DN300	460	410	12-M20	28

Note: Please make a call for larger sizes requirements.

## Foot Valve



### Features

- 1.Prevent liquid backflow: The bottom valve is installed at the bottom of the underwater suction pipe of the water pump. Its main function is to limit the return of liquid in the water pump pipe to the water source, play the role of only inflow and not outflow, and prevent liquid backflow.
- 2.Simple structure and easy operation: The internal structure of the bottom valve mainly includes three parts: valve body, valve disc and valve stem. The structure is simple and easy to operate. The valve body is usually made of cast iron or cast steel, the valve disc is made of bronze or stainless steel, and the valve stem is made of stainless steel or carbon steel.
- 3.Wide range of application: The bottom valve is suitable for various pumping pipes, especially in clean media. Although the bottom valve is equipped with an anti-clogging screen, it is not suitable for media with excessive viscosity and particles.

### Specifications

Basic Standard
● Flange end KS B 1511/JIS
● Feature
● PN:10K
● Shell test (water):2.1mpa
● Suitable temperature:≤80℃
● Suitable medium:water

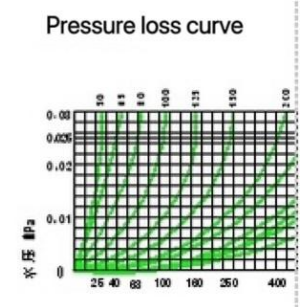
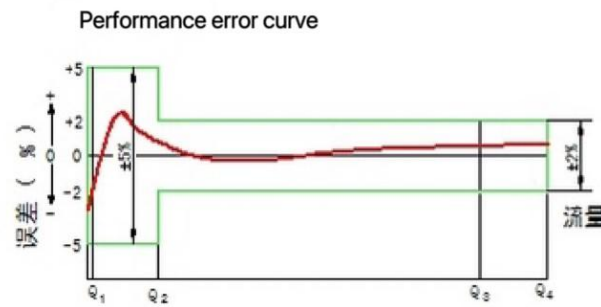
### Main part and materials

Part Name	Material
Body	Cast Iron
Disc	Cast Iron
Disc Ring	NBR
O-ring	NBR

DN	D	D1	Z*Φd	T
50	Φ155	Φ120	4*Φ19	16
65	Φ175	Φ140	4*Φ19	18
80	Φ185	Φ150	8*Φ19	18
100	Φ210	Φ175	8*Φ19	18
125	Φ250	Φ210	8*Φ23	20
150	Φ280	Φ240	8*Φ23	22
200	Φ330	Φ290	12*Φ23	22
250	Φ400	Φ350	12*Φ23	23
300	Φ445	Φ400	16*Φ25	36

Note:Please make a call for larger sizes requirements.

## Water Meter (Flange Type)

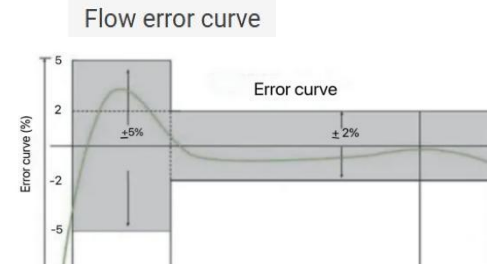
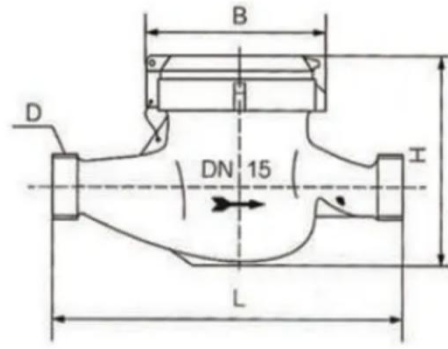


Nominal diameter mm	length h L	Width h B	height H	Bolt hole center diameter D1	Flange outer diameter D2	Connecting bolts	Nominal pressure	weight
mm						n-Md	MPa	Kg
50	200	165	215	125	165	4-M16	1.0 1.6	10
65	200	185	223	145	185	4-M16	1.0 1.6	13.5
80	225	200	233	160	200	8-M16	1.0 1.6	15.5
100	250	220	288	180	220	8-M16	1.0 1.6	18.5
125	250	250	298	210	250	8-M16	1.0 1.6	24.8
150	300	285	342	240	285	8-M20	1.0 1.6	27.6
200	350	340	369	295	340	8-M20 12-M20	1.0 1.6	47.5 48
250	450	395 405	433 436	350 355	395 405	12-M20 12-M24	1.0 1.6	85 94
300	500	445 460	456 463	400 410	445 460	12-M20 12-M24	1.0 1.6	105 114
350	500	505	595	460	505	16-M20	1.0	125
400	600	565 580	632 632	515 525	565 580	16-M24 16-M27	1.0 1.6	185 199
500	800	670 715	766 766	620 650	670 715	20-M24 20-M30	1.0 1.6	320 340
600	800	840	840	770	840	20-M41	1.6	400

Nominal diameter mm	Metering Level Q3/Q1	Overload flow Q4	Common flow Q3	Demarcation flow Q2	Minimum flow Q1	Minimum reading	Maximum reading
		m3/h					
50	50	31.25	25	0.8	0.5	0.001	999999
65	50	50	40	1.28	0.8	0.001	999999
80	50	78.75	63	2.016	1.26	0.001	999999
100	50	125	100	3.2	2.0	0.001	999999
125	50	200	160	5.12	3.2	0.001	999999
150	50	312.5	250	8.0	5.0	0.01	9999999
200	50	500	400	12.8	8.0	0.01	9999999
250	50	787.5	630	20.16	12.6	0.01	99999999
300	50	1250	1000	32	20	0.1	99999999
350	40	1750	1400	56	35	0.1	99999999
400	50	2000	1600	51.2	32	0.1	99999999
500	50	3125	2500	80	50	0.1	99999999
600	50	4000	4000	128	80	0.1	99999999

# BAAR VALVE CO., LTD.

## Water Meter (Thread Type)



Maximum allowable error

- a) Low zone ( $Q_1 \leq Q < Q_1$ ) Maximum allowable error is  $\pm 5\%$
- b) High zone ( $Q_1 \leq Q \leq Q_1$ ) Maximum allowable error is  $\pm 2\%$

### Main parameters

Temperature level: T30 Pressure loss level:  $\Delta P_{63}$  Pressure level: MAP10

Upstream flow sensitivity level: U0 Downstream flow sensitivity level: D0

### External dimensions and weight

Model	Caliber	L	B	H	Link thread (D)	Weight(kg)
LXS-15	15	165	95	106	G3/4B	1.25
			99	113		0.7
LXS-20	20	195	95	10.5	G1B	1.35
			99	114.5		0.7
LXS-25	25	225	100	115	G1 1/4B	1.85
LXS-32	32	230	100	115	G1 1/4B	2.05
LXS-40	40	245	124	153	G2	3.9
LXS-50	50	280	165	176	Flange connection according to G8T172416-2008	9.4
LXSL-15	15	141	95	105	G3/4B	1.25
LXSL-20	20	149	95	105	G1B	1.35
LXSL-25	25	162	100	110	G1 1/4B	1.85
LXSL-32	32	166	100	110	G1 1/2B	20.5

Nominal diameter(mm)	Q3/Q1	Overload flow Q4	Common flow Q3	Demarcation flow Q2	Minimum flow Q1	Minimum reading (Min)	Maximum reading (Max)
		m <sup>3</sup> /h		L/h			
15	63	3.125	2.5	63.5	39.7	0.00005	99999
	80			50	31.26		
	100			40	25		
	125			32	20		
	160			25	15.625		
20	63	5	4	101.6	66.5		
	80			80	50		
	100			64	40		
	125			51.2	32		
	160			40	25		
25	63	7.875	6.3	100	100		
	80			126	78.75		
	100			100.8	63		
	125			80.6	50.4		
	160			63	39.375		
32	63	7.875	6.3	100	100		
	80			126	78.75		
	100			100.8	63		
	125			80.6	50.4		
	160			63	39.375		
40	63	20	16	406.4	254	0.00005	999999
	80			320	200		
	100			256	160		
	125			204.8	128		
	160			160	100		
50	63	31.25	25	635	397		
	80			500	312.5		
	100			400	250		
	125			320	200		
	160			250	156.25		

## Steam Trap Valves

### Connection

Threaded:BSP or NPT

Flanged:EN1092 PN16/PN25/PN40,ANSI CLASS150

### Standard

Design standard:ISO6552;EN26704

Connection length:EN26554;GB/T12250

Test standard:EN26948;GB/T12251

### Connection Type

Horizontal connection/vertical connection

FT43



FT44



## Metal Seat Gate Valves



**DIN3352**



**BS5163**



**AWWA**



**RUSSIA STANDARD**



We have different standard gate valve. DIN3352 standard, BS5163 standard, AWWA standard and Russia standard metal seal gate valve. rising and non- rising type. A variety of types for you to choose from.

Gate valves play an important role in the industrial field due to their unique structure and excellent performance. Different types of gate valves are suitable for different application scenarios. Choosing the right type of gate valve is crucial to ensure the safety and efficiency of the system.

If you want to more information, please contact us.

**Pipe Fittings**



**Flanged Elbow (90°)**



**Flanged Elbow(45°)**



**Flanged Reducer**



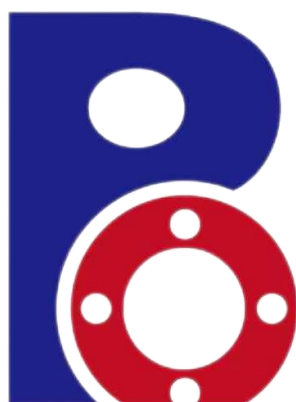
**Universal Coupling**



**Universal Adaptor**



**Flanged Reducer Tee**



We are Baar valve co., Ltd.

We have butterfly valve,gate valve,check valve,steam trap valve,Y-strainer and so on.

We have 4 years export experience.

If you want more information, please contact us.

**We are in Baar, we are waiting for you!!!**

## **BAAR VALVE CO., LTD.**

Chengjiaquan Village, Xiaozhan Town, Jinnan District, Tianjin

[www.baarvalve.com](http://www.baarvalve.com)

Email: bobo@beoncy.com

Connie: +86-18322653719

Iris: +86-18222043411

Nola: +86-13920377833

Tina: +86-19902177297

John: +86-17702223018

Lexi: +86-18142232421

Chelsea: +86-18102184797



WeChat



WhatsApp